

# CLUB WYNDHAM BRANSON AT THE MEADOWS



## FAMILY-FRIENDLY GETAWAY IN THE GORGEOUS OZARK MOUNTAINS

Branson-style fun for your whole group! You'll love suite comforts with relaxing space for everyone along with pools, games, sports and more in the heart of world-class entertainment and unlimited attractions.



### THE AREA

- White Water - Water Park - 2.8 mi.
- Titanic Museum - 2.5 mi.
- Branson's Wild World - 3 mi.
- Silver Dollar City - 5.5 mi.
- Table Rock Lake - .7 mi.
- Tanger Factory Outlet - 4.2 mi.

### GETTING THERE

- Branson Airport - 16 mi.
- Boone County Regional Airport - 33 mi.
- Springfield Airport - 58 mi.

### AMENITIES

- In/Outdoor Pools
- Hot Tubs
- Playground
- Spa
- Movie Theater
- Picnic & BBQ Area
- Outdoor Pavilion
- Basketball Courts
- Shuffleboard/Bocce Ball
- Tablerock Grill
- Resort Activities Center
- Fitness Center
- ATM - Wi-Fi

### UNIT TYPES

- **ONE-BEDROOM SUITE**  
-Approx. 353 sq. ft.; Sleeps 4  
-King bed, queen sofa bed, 1 Bath
- **ONE-BEDROOM DELUXE**  
-Approx. 1,075 sq. ft.; Sleeps 4  
-King bed, queen sofa bed, 1 Bath
- **TWO-BEDROOM SUITE**  
-Approx. 1,180 sq. ft.; Sleeps 6  
-2 Double beds, king bed, queen sofa bed, 2 Bathrooms
- **THREE-BEDROOM DELUXE**  
-Approx. 1,550 sq. ft.; Sleeps 10  
-2 Double beds, 2 king beds, queen sofa bed, 2 Full bathrooms

### GROUP BOOKING GUIDELINES

Planning a wedding, convention or other group stay? Contact us for 6+ rooms:

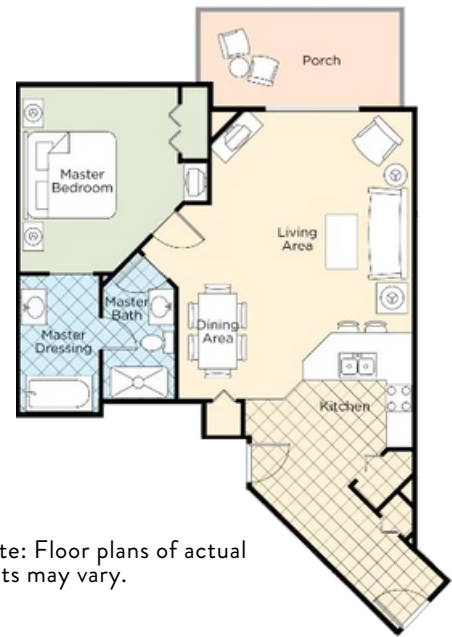
1 (800) 619-4831  
[EHgroups@wyn.com](mailto:EHgroups@wyn.com)



110 Willow Bend Drive  
Branson, MO 65616  
(417) 336-4993  
[Property Link](#)

## KEY FEATURES

- Spacious floorplan
- In-suite kitchen facilities
- Washer/dryer in suite
- Cashless, non-smoking resort
- Meeting spaces perfect for groups up to 250 people
- Standard lobby check-in service, as well as a curb-side option if requested
- Minutes from the Famous Branson Strip & Table Rock Lake
- Accessible suites available in one- and two-bedrooms
- Accessible parking



\*Note: Floor plans of actual units may vary.

## CLUB WYNDHAM BRANSON AT THE MEADOWS

Popular resort with Branson family attractions, sight-seeing and outdoor activities.



## RESORT POLICIES

- Advance deposit on credit card equal to one-night stay (+ tax) at booking
- Cancellations < 72 hrs. before check-in charged one-night stay (+ tax)
- Refundable \$250 check-in credit card deposit
- Recreation Center rules require children under 14 to be accompanied by an adult
- No pets
- Free limited parking
- Free cribs, no rollaways
- Check-in 4PM; Check-out 10AM

\*Note: Policies are subject to change.

EXTRA HOLIDAYS

CHRISTINA JOHNSON

Regional Director  
Rental Sales



[christina.johnson@travelandleisure.com](mailto:christina.johnson@travelandleisure.com)  
(816) 446-6690

Check it out:  
VIRTUAL TOUR